

Pioneer Urban Land and Infrastructure Ltd. is rapidly evolving to become a provider of premier lifestyles. For the last two decades, Pioneer Urban has been at the forefront of path breaking developments across Delhi NCR.

With a roster of innovative projects such as Nirvana Country, Greenwoods City, South City II under its belt, Pioneer Urban is fast becoming a name to reckon with. With Vista Villas, the company has also achieved the distinction of becoming the first one to introduce villas with landscaped greens.

People, places and experience are the ingredients for the recipe that makes Pioneer Urban what it is today. It is a name that stands for trust and reliance that is backed by a team of seasoned professionals including architects, engineers and marketing specialists, who deliver what they promise.

BESPOKE LUXURY

Pioneer Urban is founded on a vision that seeks commitment to a high quality in every single undertaking, recognizing the need of growth across the real estate industry with consumer centric approach. We have created lifestyle impressions and articulate residences that avail more than just spaces to live in.

For us the pride of success is efficiency, effectiveness and perfection. Taking care of quality and customer satisfaction, we provide you with the advantage of opulence with your touch to create your dream home. One such luxuriant living experiences will be at Araya. Keeping our heritage of high quality, we offer you the wonderland beyond your imagination. The time has come to embark you with the best of world class amenities.

I welcome you to take a look at an exceptionally grand launch pad of your desired comforts with a blend of the finest ambience.

Chairman
Manish Periwal



EXQUISITE
INDULGENCE



WELCOME TO ARAYA

Built with a sense of impeccable expertise that only comes after years of perseverance, Araya rises to achieve what has always eluded many - perfection. Araya, located in Gurgaon, Delhi NCR, gives you the ease of reach and a complete peace of mind.

Welcome to your home, welcome to Araya.





A PRIVILEGE RESERVED
FOR THE ELITE



YOUR PRIVATE RETREAT

An extension of your highly refined world, Araya promises the experience of impeccable and incomparable lifestyle. We invite you to savour the delight of living at this exclusive address. The Araya residences offer a unique opportunity to expand your lifestyle with a multitude of tasteful choices at your disposal.



FURNISHINGS PAST COMPARE

Designed to surpass expectations, Araya residences emulate uber contemporary feel, subtly manifested in the architectural style and choice of furnishing.

You are whisked up in a secure elevator, which alights into your private lobby. The burst of radiance from the double height ceilings takes your breath away, as you absorb every fine detail that has been lovingly crafted for you. Walk into your home and feel the spaces blend harmoniously around you.

From the finest marble to timber veneered wooden doors, European modular kitchen to imported wardrobes, thoughtful extravagance touches every aspect of your home.



THE FINER DETAILS

A private sanctuary awaits you at the ensuite bath in your master bedroom. With avant-garde features like jacuzzi, steam, enclosed rain shower, you can experience nirvana in complete privacy.

Complementing your luxurious lifestyle is a state-of-the-art spacious kitchen with all modern accessories and fittings that make cooking a simple pleasure to delve in.





Araya is designed for the modern connoisseur, where residents and their guests experience an unparalleled lifestyle.

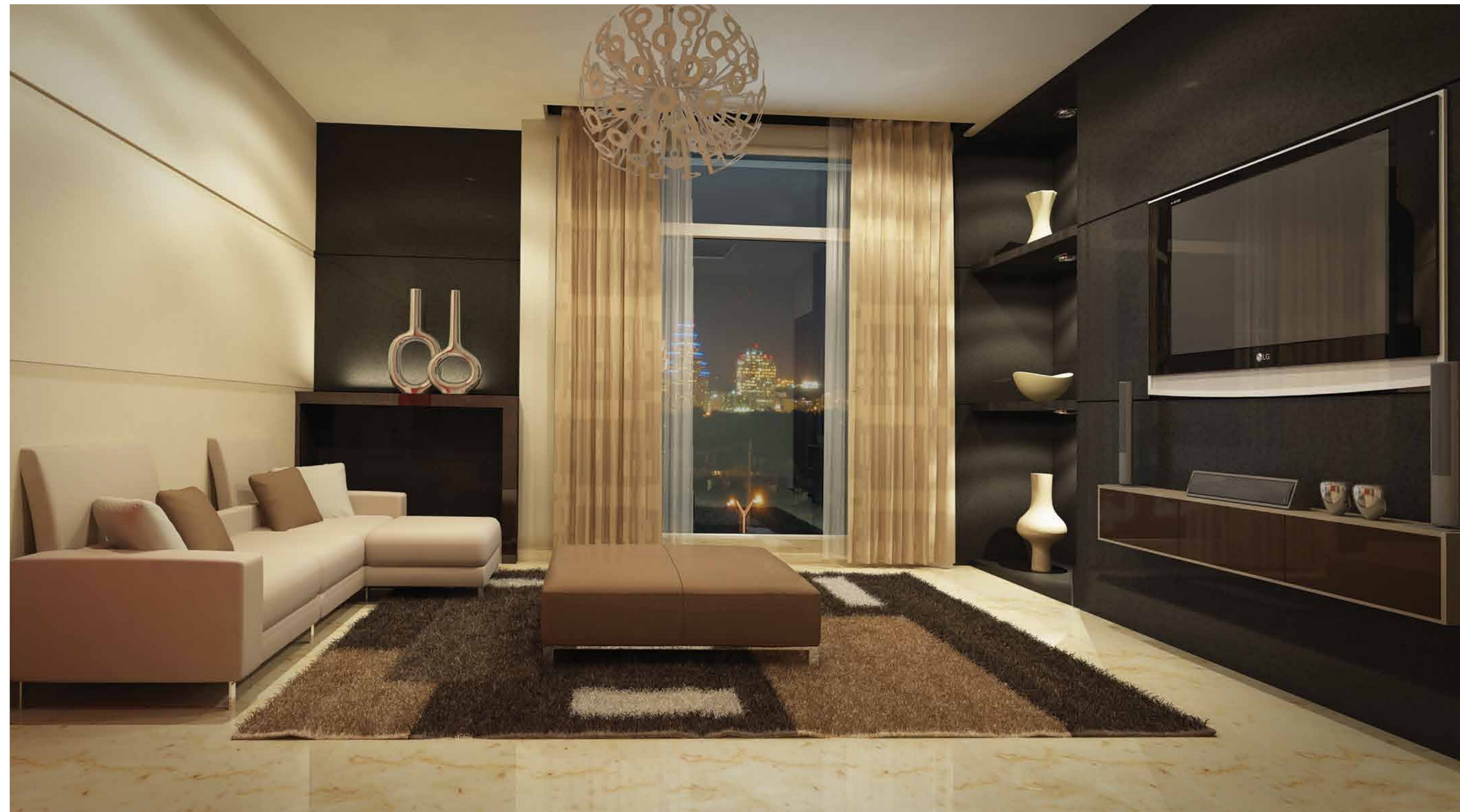
AMENITIES FOR A COMPLETE LIFE

Araya offers you distinctive conveniences that meet your individual needs. Our myriad in-house offerings provide you with every comfort you may require. From the lavish swimming and splash pools to the state-of-the-art gymnasium, world-class indoor squash courts to luxurious rejuvenating spa, an exclusive lounge to a chic restaurant, the beyond comparison residences bring all the plush facilities to pamper the best in you. The indulgence in a sumptuous lifestyle can just never stop here.



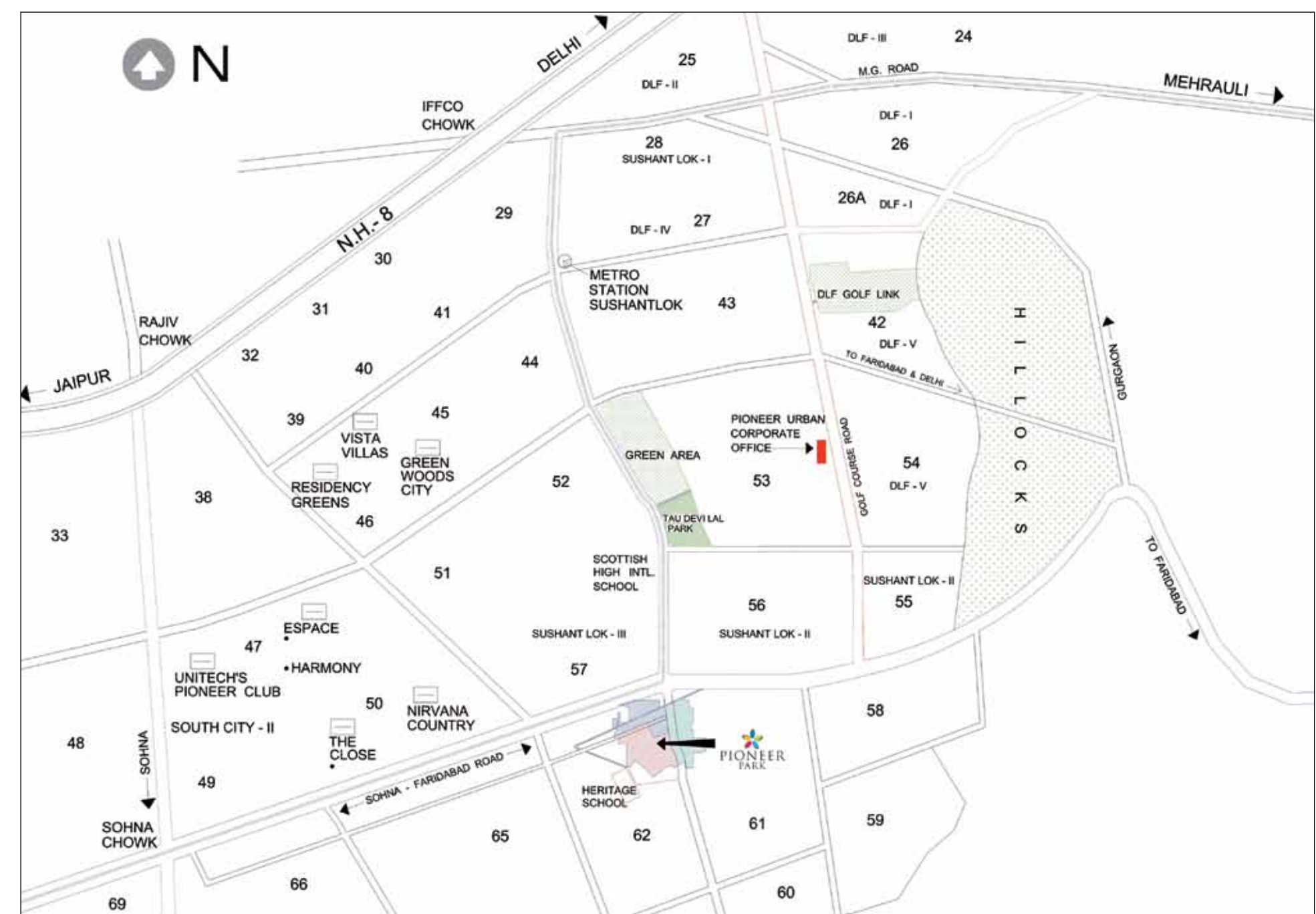
UNCOMPROMISED
DISTINCTION







LOCATION



MASTERPLAN

- 1 Urban Square
- 2 Retail Plaza and Gardens
- 3 Sector Road Streetscape
- 4 Primary School
- 5 High Street
- 6 Office Tower
- 7 Residential Towers
- 8 Pedestrian Bridge
- 9 Club House
- 10 Parkdrive
- 11 Midrise Towers
- 12 Greens



SITEPLAN



3BHK
TOWER A,B,C



AREA 3498 sqft

SPECIAL UNIT 3BHK + TERRACE
TOWER A,B,C



AREA 3858 sqft

4BHK
TOWER A,B,C



AREA 4279 sqft

4BHK
TOWER A,B,C



AREA 4403 sqft

4BHK + FAMILY
TOWER A,B,C



AREA 4690 sqft

SPECIAL UNIT 4BHK + FAMILY + TERRACE
TOWER A,B,C



AREA 4983 sqft



DESIGN MEETS OPULENCE

GRAND DUPLEX RESIDENCES

TOWNHOUSE LOWER 4BHK + FAMILY + TERRACE
TOWER A,B,C



AREA 7004 sqft

TOWNHOUSE UPPER 4BHK + FAMILY + TERRACE
TOWER A,B,C



AREA 7004 sqft

PENTHOUSE LOWER FLOOR 5BHK + FAMILY
+ POOL & SUNDECK
TOWER A,B,C



AREA 9625 sqft

PENTHOUSE UPPER FLOOR + FAMILY
+ POOL & SUNDECK
TOWER A,B,C



AREA 9625 sqft

4BHK
TOWER D



AREA 4613 sqft

4BHK SPECIAL
TOWER D



AREA 4739 sqft

4BHK + FAMILY
TOWER D



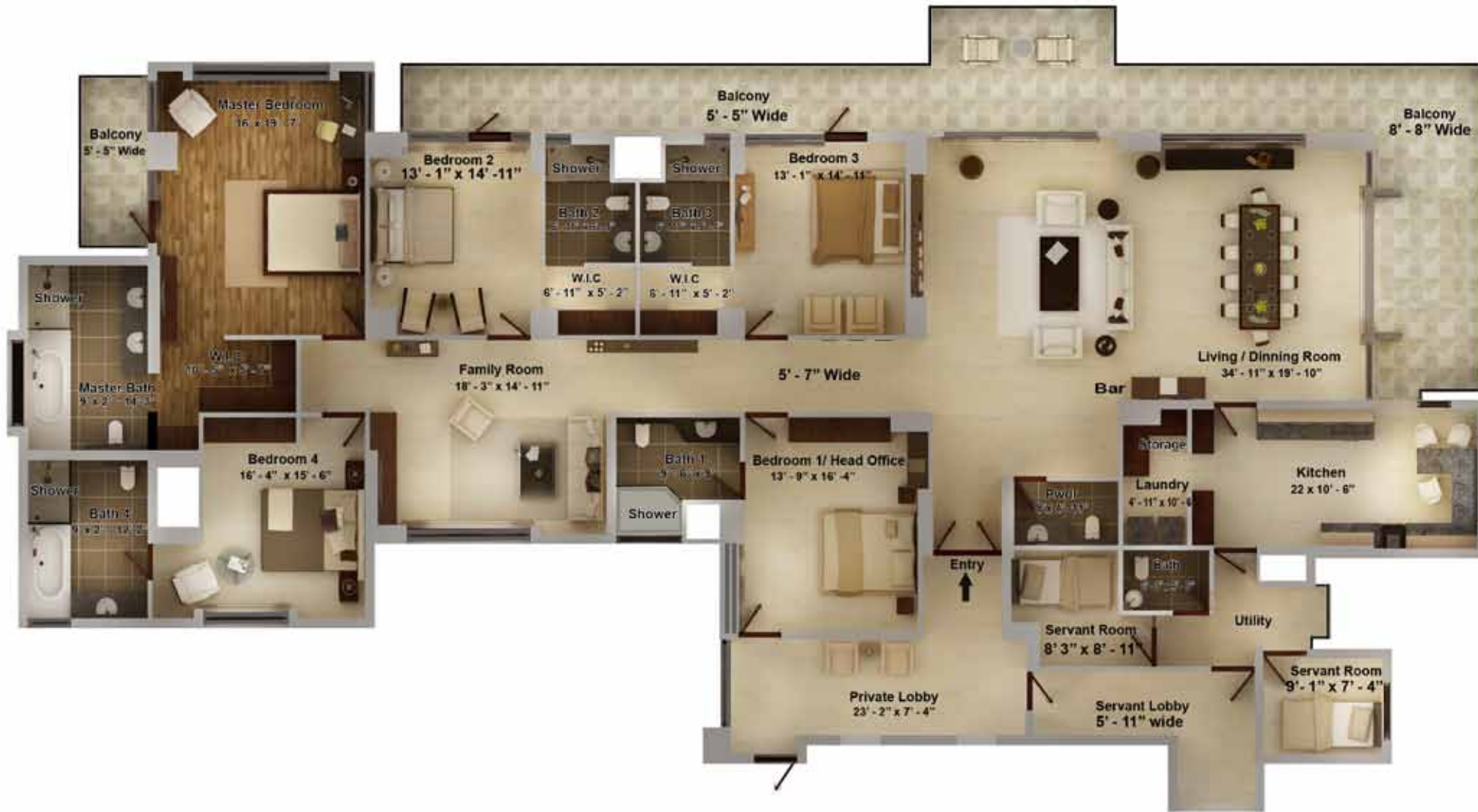
AREA 4902 sqft

4BHK + FAMILY + TERRACE
TOWER D



AREA 5310 sqft

5BHK + FAMILY
TOWER D



EXTRAORDINARY LIVING

GRAND DUPLEX RESIDENCES

AREA 5761 sqft

TOWNHOUSE LOWER 4BHK + FAMILY + TERRACE
TOWER D



AREA 7673 sqft

TOWNHOUSE UPPER 4BHK + FAMILY + TERRACE
TOWER D



AREA 7673 sqft

PENTHOUSE LOWER
 5BHK + FAMILY + POOL + SUNDECK
 TOWER D



AREA 10019 sqft

PENTHOUSE UPPER
 5BHK + FAMILY + POOL + SUNDECK
 TOWER D



AREA 10019 sqft

SPECIFICATIONS

Living room		Powder room	
Walls	stone cladding/ feature wall	Walls	imported tiles
Floor	italian/ european marble	Floor	imported tile/ marble
Doors and windows	metal and timber veneered	Doors and windows	timber veneered and aluminium
		Others	shower cubicle
			Premium imported cp fittings
			Premium imported sanitaryware
Master bedroom			
Walls	imported texture paint	Kitchen	
Floor	premium imported wood	Walls	combination of lacquered glass and
Doors and windows	metal and timber veneered		imported tiles
		Floor	imported tiles
		Doors and windows	metal and timber veneered
		Others	high end european modular kitchen
Other bedroom			
Walls	imported texture paint	Balconies	
Floor	italian/ european marble	Walls	textured paint
Doors and windows	metal and timber veneered	Floor	imported tiles
		Doors and windows	timber veneered and aluminium
		Railings	stainless steel with toughened glass
Master bath			
Walls	imported tile	Lift lobby	
Floor	imported tile/ marble	Walls	imported stone cladding
Doors and windows	timber veneered and aluminium	Floor	italian/ european marble
Others	steam/ jacuzzi		
	Shower cubicle		
	Premium imported cp fittings		
	Premium imported sanitaryware		
Other bathrooms			
Walls	imported tiles		
Floor	imported tile/ marble		
Doors and windows	timber veneered and aluminium		
Others	shower cubicle		
	Premium imported cp fittings		
	Premium imported sanitaryware		



ARAYA TOWER A,B,C

PRICES

Sale Price including EDC & IDC	As Applicable
Preferential Location Charges (PLC)	As Applicable
Car Parking Charges	Rs.3 Lac per bay (Covered)

S. NO	LINKED STAGES	PAYMENT
1.	On Booking	10 % of Sale Price
2.	Within 60 days of Allotment	10 % of Sale Price
3.	On start of Excavation	7.5 % of Sale Price
4.	On Completion of 3rd basement roof slab	7.5 % of Sale Price
5.	On Completion of Ground floor roof slab	5 % of Sale Price + 50% of Car Parking
6.	On Completion of 4th floor roof slab	5 % of Sale Price + 50% of Car Parking
7.	On Completion of 8th floor roof slab	5 % of Sale Price
8.	On Completion of 12th floor roof slab	5 % of Sale Price
9.	On Completion of 15th floor roof slab	5 % of Sale Price + 50% of PLC if applicable
10.	On Completion of 18th floor roof slab	5 % of Sale Price + 50% of PLC if applicable
11.	On Completion of 21st floor roof slab	5 % of Sale Price
12.	On Completion of 24th floor roof slab	5 % of Sale Price
13.	On Completion of 27th floor roof slab	5 % of Sale Price
14.	On Completion of 30th floor roof slab	5 % of Sale Price
15.	On Completion of final floor roof slab	5 % of Sale Price
16.	On Receipt of occupation certificate	5 % of Sale Price
17.	On intimation for possession	5 % of Sale Price + IBMS(See note 1)+ Stamp Duty

+ Registration Charges (See note 2)

NOTE

- Interest Bearing Maintenance Security (IBMS) Rs.100/- per sq. ft.
- Stamp Duty / Registration Charges shall be payable along with the last installment based on prevailing rates.
- Club Membership Rs.75000/-
- PLC as applicable
- 3 Car Parks for all units are mandatory.
- Price subject to revision at the sole discretion of the company

ARAYA TOWER D

PRICES

Sale Price including EDC & IDC	As Applicable
Preferential Location Charges (PLC)	As Applicable
Car Parking Charges	Rs.3 Lac per bay (Covered)

S. NO	LINKED STAGES	PAYMENT
1.	On Booking	10 % of Sale Price
2.	Within 60 days of Allotment	10 % of Sale Price
3.	On start of Excavation	7.5 % of Sale Price
4.	On Completion of 3rd basement roof slab	7.5 % of Sale Price
5.	On Completion of Ground floor roof slab	5 % of Sale Price + 50% of Car Parking
6.	On Completion of 3rd floor roof slab	5 % of Sale Price + 50% of Car Parking
7.	On Completion of 6th floor roof slab	5 % of Sale Price
8.	On Completion of 9th floor roof slab	5 % of Sale Price + 50% of PLC if applicable
9.	On Completion of 12th floor roof slab	5 % of Sale Price + 50% of PLC if applicable
10.	On Completion of 15th floor roof slab	5 % of Sale Price
11.	On Completion of 18th floor roof slab	5 % of Sale Price
12.	On Completion of 21st floor roof slab	5 % of Sale Price
13.	On Completion of 24th floor roof slab	5 % of Sale Price
14.	On Completion of 27th floor roof slab	5 % of Sale Price
15.	On Completion of final floor roof slab	5 % of Sale Price
16.	On Receipt of occupation certificate	5 % of Sale Price
17.	On intimation for possession	5 % of Sale Price + IBMS(See note 1)+ Stamp Duty

+ Registration Charges (See note 2)

NOTE

- Interest Bearing Maintenance Security (IBMS) Rs.100/- per sq. ft.
- Stamp Duty / Registration Charges shall be payable along with the last installment based on prevailing rates.
- Club Membership Rs.75000/-
- PLC as applicable
- 3 Car Parks for all units are mandatory.



REFINED ELEGANCE

TO GET MORE INFORMATION ABOUT ARAYA

PLEASE VISIT
PIONEER PARK SALES PAVILION
SECTOR - 62, GOLF COURSE EXTENSION ROAD
GURGAON, INDIA
T: 0124 2722 000, +91 99999 84840 or +91 99999 84841

PIONEER URBAN CORPORATE OFFICE
PARAS DOWNTOWN CENTER, 5TH AND 7TH FLOOR
GOLF COURSE ROAD, SECTOR - 53
GURGAON, INDIA
T: 0124 4322 300

PLEASE EMAIL US AT SALES@PIONEERURBAN.IN

ARAYA.CO.IN



